



## Applying Pro-Line Aqua Seal as a water resistive barrier over DensGlass™ Exterior Sheeting



**Purpose:** Providing a water resistive barrier under ceramic tile or stone over DensGlass™ Exterior Sheeting.

**Site Conditions:** Sheeting on building exterior should be dry; air temperature should be a minimum of 55° F or warmer before applying Aqua Seal.

### Substrate prep

\*\*DensGlass™ Exterior Sheeting needs to be installed per manufacturer's instructions. All surfaces must be structurally sound. Surfaces shall be dry and free of all grease, oil, dust, dirt, old adhesive residue, waxes, sealers, efflorescence, and any other loose or foreign matter.

### AQUA SEAL APPLICATION

#### Seam Prep

All seams and corners are required to have 6" mesh embedded in Aqua Seal before applying first coat. Gapping between sheets should not exceed 1/8".



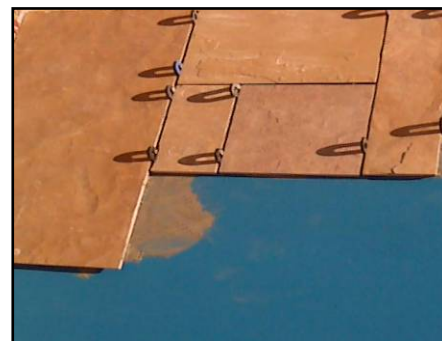
#### Application Coat

Use a rough textured synthetic roller at 3/4", sprayer, or 3/16" x 1/4" V-notched trowel. If using trowel, flatten ridges after initial application. If using roller, apply an even film with overlapping strokes. If using sprayer, flow rate should be between 1.0 and 1.5 gpm at 1900 to 2300 psi. Tip orifice should be .025 to .029 and should be applied with even, overlapping strokes. Aqua Seal is bright aqua in color when wet and dries to a darker blue. After initial coat, apply second coating at right angle to first application after visually inspecting first applications for pinholes and voids. Combined dry coating should be at least 47 mils (0.047") thick or a minimum of 93 mils (0.093") when wet and should not exceed 125 mils (0.125") when wet.



#### COVERAGE:

Aqua Seal: 5 gallon pail: 175 - 200 sq. ft. at 93 mil thickness when wet, 47 mils dry



**Ceramic Tile or Stone installation-** can be applied directly to dry membrane. Use a Latex-Polymer modified dry-set mortar per product directions and literature. ANSI 118.4, ANSI 118.11. All surfaces must be structurally sound and subject deflection not to exceed 1/360<sup>th</sup> of the span. Expansion joints shall be installed in accordance with local building codes and manufacturer's instructions per the specifications detailed in EJ 171 in the T.C.N.A. Handbook. Expansion joints, control joints and cold joints shall never be bridged with setting material.